

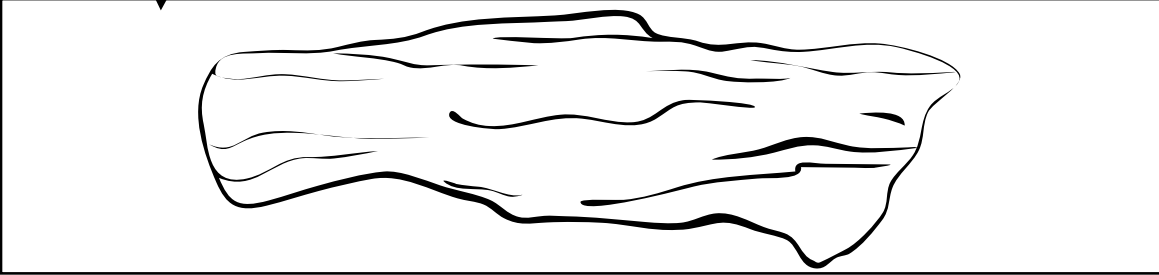

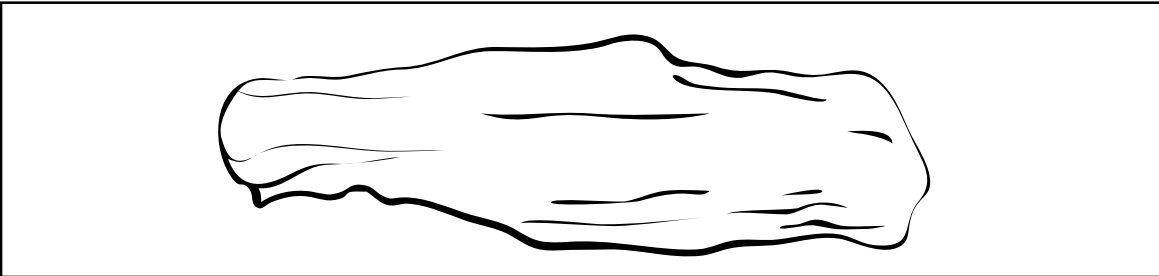

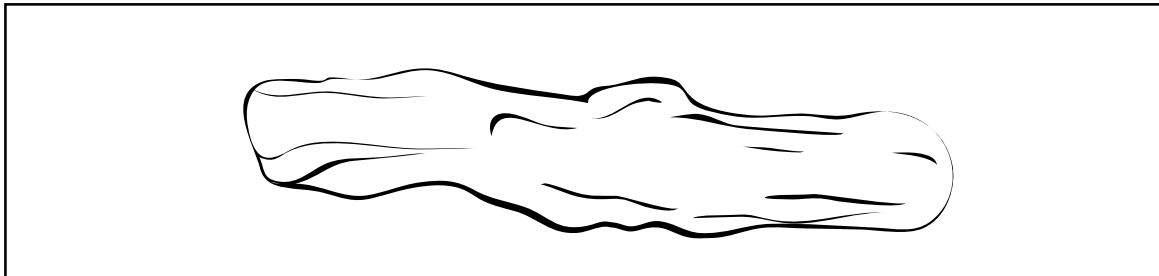

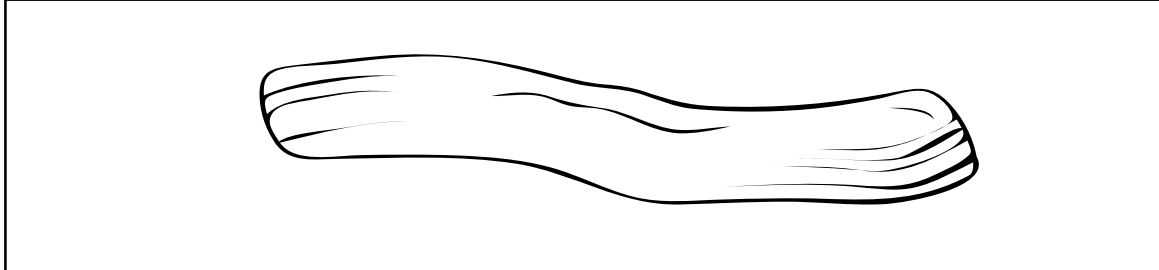


Bess Beetle Activities

Observe

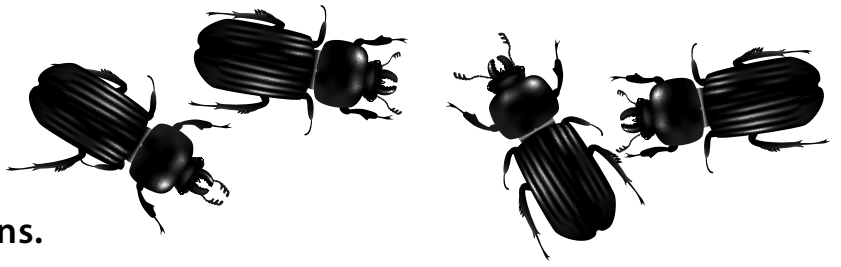
Bess beetles gradually decompose the wood they live in by eating the wood fibers. Observe what the wood looks like each week as the beetles eat it. Record the changes by drawing the wood. Pay attention to the thickness of the wood. The beetles will eat the softer, outer wood first.

Draw 

 week	
 week	
 week	
 week	

The beetles will eat the softer, outer wood until gradually the denser, central core of the wood is revealed.

Bess Beetle Activities



Vocabulary Write the definitions.

beetle - any insect with four wings, two of which are hardened outer wings (elytra) that protect the inner pair of wings.

elytra - the pair of hard anterior wings in beetles that protect the functional wings underneath.

frass - the excrement produced by insects; used by Bess beetles to construct pupal case.

metamorphosis - the process of transformation from an immature form to an adult form in three or more distinct stages.

Passalidae - a family of large, black beetles that live in and feed on decaying wood.

pronotum - the plate-like structure that covers the thorax of some insects.

stridulation - the act of producing noise by rubbing together body parts; most typically associated with insects.

Labeling

Label the body parts on the Bess beetle. Fill in the ten blanks below with the words from the word bank.

abdomen	compound eye	head	legs	pronotum
antenna	elytra	horn	mandible	thorax

